



BERMUDA

MARINE BOARD (CONTROL OVER MARITIME TRAFFIC) NOTICE 2020

BR 81 / 2020

The Minister responsible for marine and ports services, in exercise of the power conferred by section 10(1)(aa) of the Marine Board Act 1962, issues the following Notice:

Citation

1 This Notice may be cited as the Marine Board (Control Over Maritime Traffic) Notice 2020.

Prohibition of jet skis

2 (1) A person operating a personal watercraft, commonly known as a jet ski, is prohibited from entering the areas of water set out in subparagraph (2) during the time set out in subparagraph (3).

(2) The areas or water referred to in subparagraph (1) are—

- (a) the waters commonly known as Paradise Lakes, including all territorial waters between Hawkins Island, Nelly Island, Ports Island, Long Island, Beta Island, Gamma Island, Delta Island, Epsilon Island, Zeta Island, Iota Island, Eta Island, Marshalls Island and Fern Island, delineated in red in Schedule 1;
- (b) the waters of Mangrove Bay in Somerset, southwest of a line between the southern end of Watford Bridge and the easternmost island at the tip of King's Point, delineated in red in Schedule 2; and
- (c) the waters commonly known as Somerset Long Bay and Cambridge Beaches in Somerset, South of a line from Daniel's Head to Flora Point, delineated in red in Schedule 2.

(3) The time referred to in subparagraph (1)—

MARINE BOARD (CONTROL OVER MARITIME TRAFFIC) NOTICE 2020

---

- (a) begins at 05:00 hours on Thursday 30 July 2020; and
- (b) ends at 22:00 hours on Sunday 2 August 2020.

Exemption

3 This Notice does not apply to personal watercraft operated by the Bermuda Coast Guard.

Offence

4 A person who fails to observe the requirements of this Notice commits an offence under section 10(3)(a) of the Marine Board Act 1962, punishable on summary conviction in accordance with section 112 of that Act.

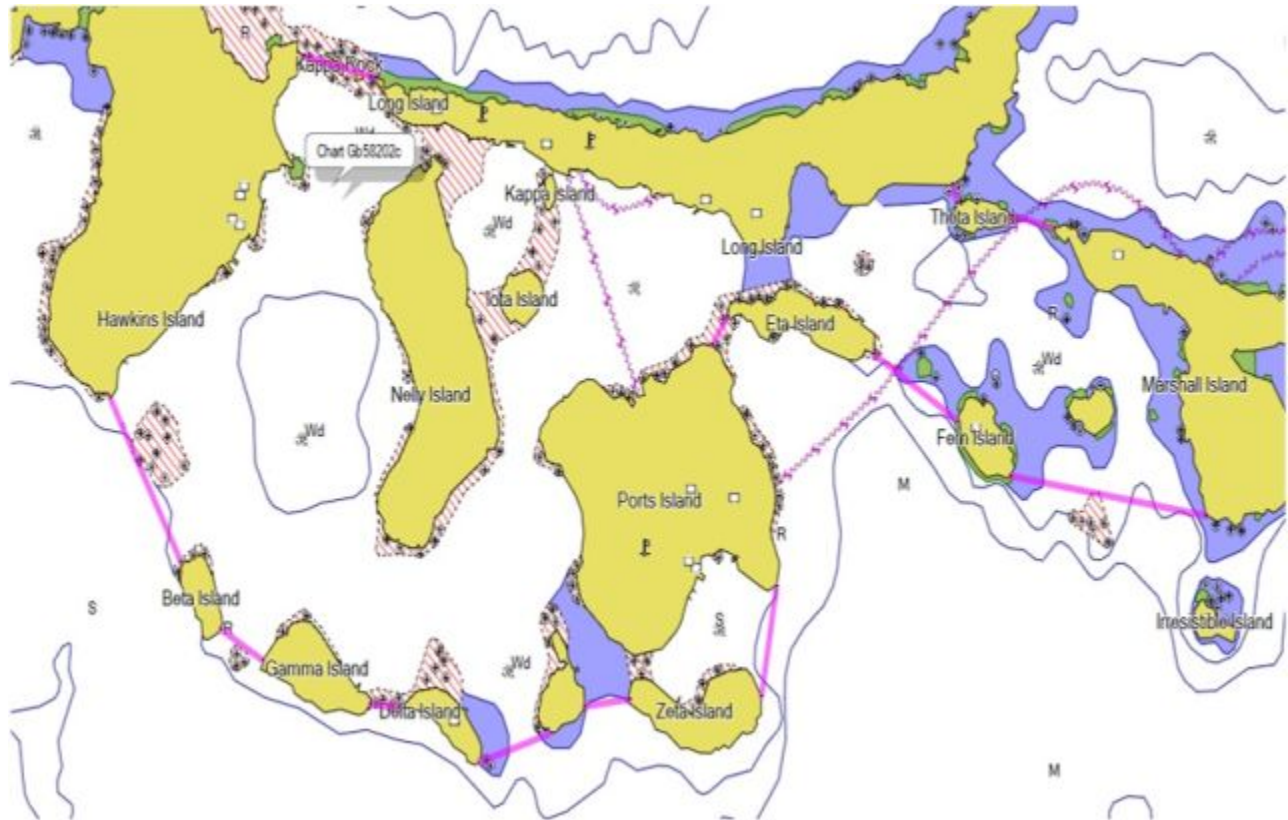
MARINE BOARD (CONTROL OVER MARITIME TRAFFIC) NOTICE 2020

---

SCHEDULE 1

(paragraph 2(2)(a))

CLOSURE OF PARADISE LAKES



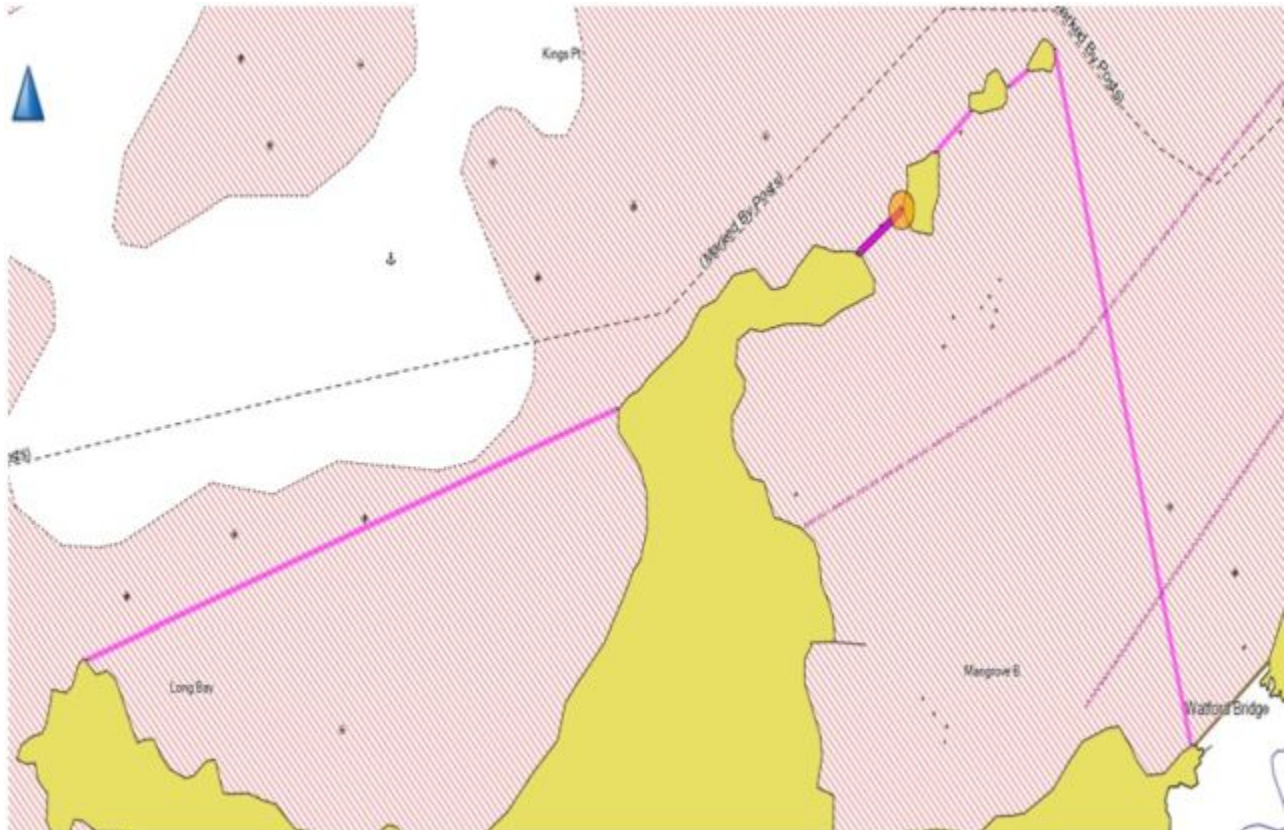
MARINE BOARD (CONTROL OVER MARITIME TRAFFIC) NOTICE 2020

---

SCHEDULE 2

(paragraph 2(2)(b) and (c))

CLOSURE OF MANGROVE BAY AND SOMERSET LONG BAY



Made this 23rd day of July 2020

Minister of Transport

[Operative Date: 24 July 2020]